

This guide explains the technical requirements and instructions for a *consulting* site to successfully set up their computer to use OTN's Telederm service.

A *consulting* site is where a specialist (e.g., dermatologist) uses their Telederm Medweb Viewer to access a referral. They can view, navigate and annotate images, create a diagnostic report, and attach patient education materials

For a consulting site there are two steps:

1. [Review the System Requirements.](#)
2. [Log in and install the Telemedicine Viewer.](#)



## System Requirements

### Hardware Requirements

- Processor – Pentium 4 or better
- RAM – minimum 512MB of RAM
- Monitor – Minimum 1024 x 768 Resolution Monitor at 32 bit color depth
- Hard disk space – Minimum 100MB

### Platform and Browser Requirements

- Windows 7, 8, 10 – Internet Explorer or Chrome
- Mac – Chrome or Safari
- iPhone and iPad – Safari
- Android – Chrome

Notes: (1) The *Medweb “Advanced Viewer”* is limited to Windows PC with Internet Explorer 11.

(2) The *OTN Telederm app* is available only to users with OTN credentials (the app is not integrated with ONE ID).

### Internet connectivity:

- Internet connectivity with at least 256 kbps upload bandwidth
- Allow secure access to Store Forward application server (*i.e.*, https://)



## Logging In & Installing the Medweb Viewer Plugin

### Logging In

1. Open a new browser window, go to [otnhub.ca](http://otnhub.ca) and click .


A **Sign In Selection** screen appears.

2. Based on your login credentials (ONE ID or OTN), click the appropriate **Sign In** button.

A ONE ID or an OTN **Sign In** screen appears.

3. Type your user name and password and click the **Sign In** button.

The **OTNhub home** screen appears.

4. Click **Teledermatology** in the bottom menu and then click  in the pop-up panel.

The **Teledermatology home** page appears.



Figure 1: Sign in sequence

5. To access the **View Patients dashboard**, click  in the left navigation panel.



Figure 2: Telederm home page

The Telederm **View Patients dashboard** screen appears.

The next step is to install the plugins.

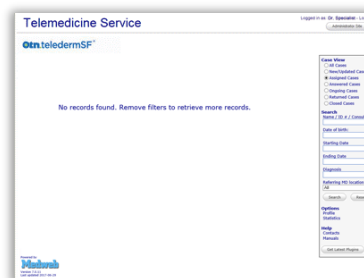


Figure 3: View Patients dashboard



## Installing the Telemedicine Viewer

1. To access the plugins download page, click [Get Latest Plugins](#) at the bottom of the right navigation panel

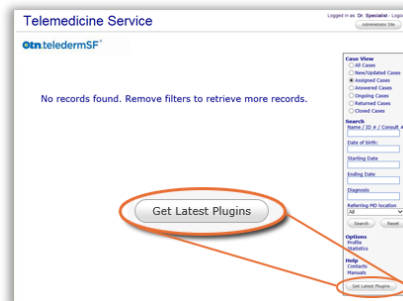


Figure 4: Telederm home page

The **Download software** screen appears in a new tab/window.

2. In the row titled **Medweb Advanced Viewer**, click the [Download plugin...](#) link.

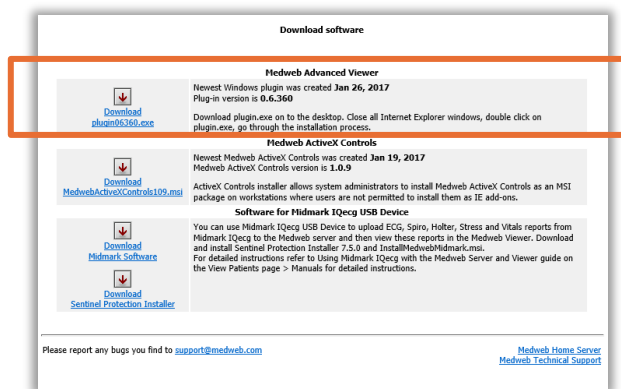


Figure 5: Download Advanced Viewer

3. A pop-up message appears, asking whether you want to Run, Save or Cancel. Click **Run**.
  - The install process differs slightly depending on which browser version you use (IE or Chrome).
  - If a pop-up security warning appears during the installation, click the button that allows you to continue and install. For example, Unblock or Allow access.

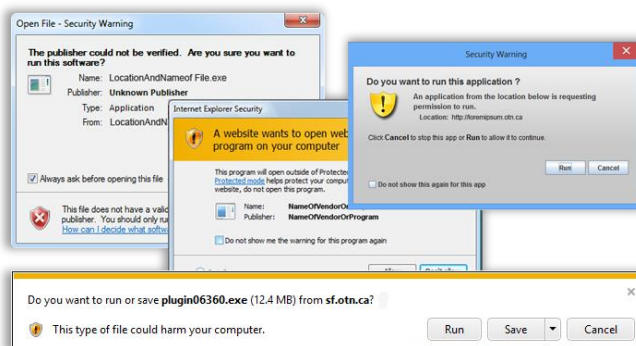


Figure 6: Get latest plugins button

4. Follow the on-screen prompts and in the final dialog box, click the **Finish** button.

The installation completes and you return to the **Download software** screen.

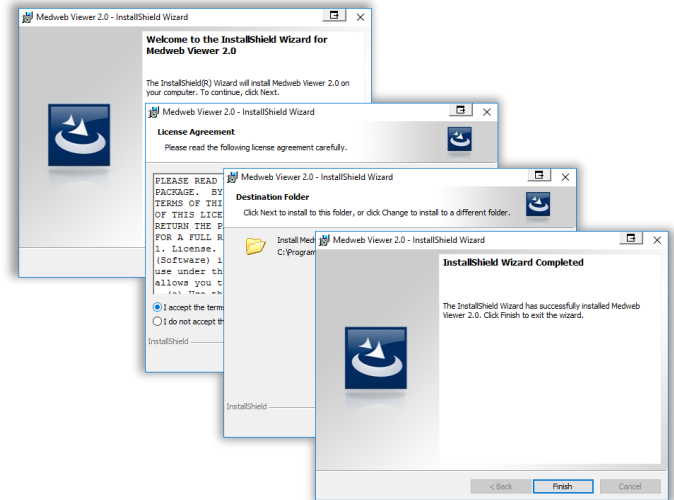


Figure 7: Plugin install pop-ups

You can now start using the Telederm service.

