

eConsult: Standard Workflow

Minimum Requirements

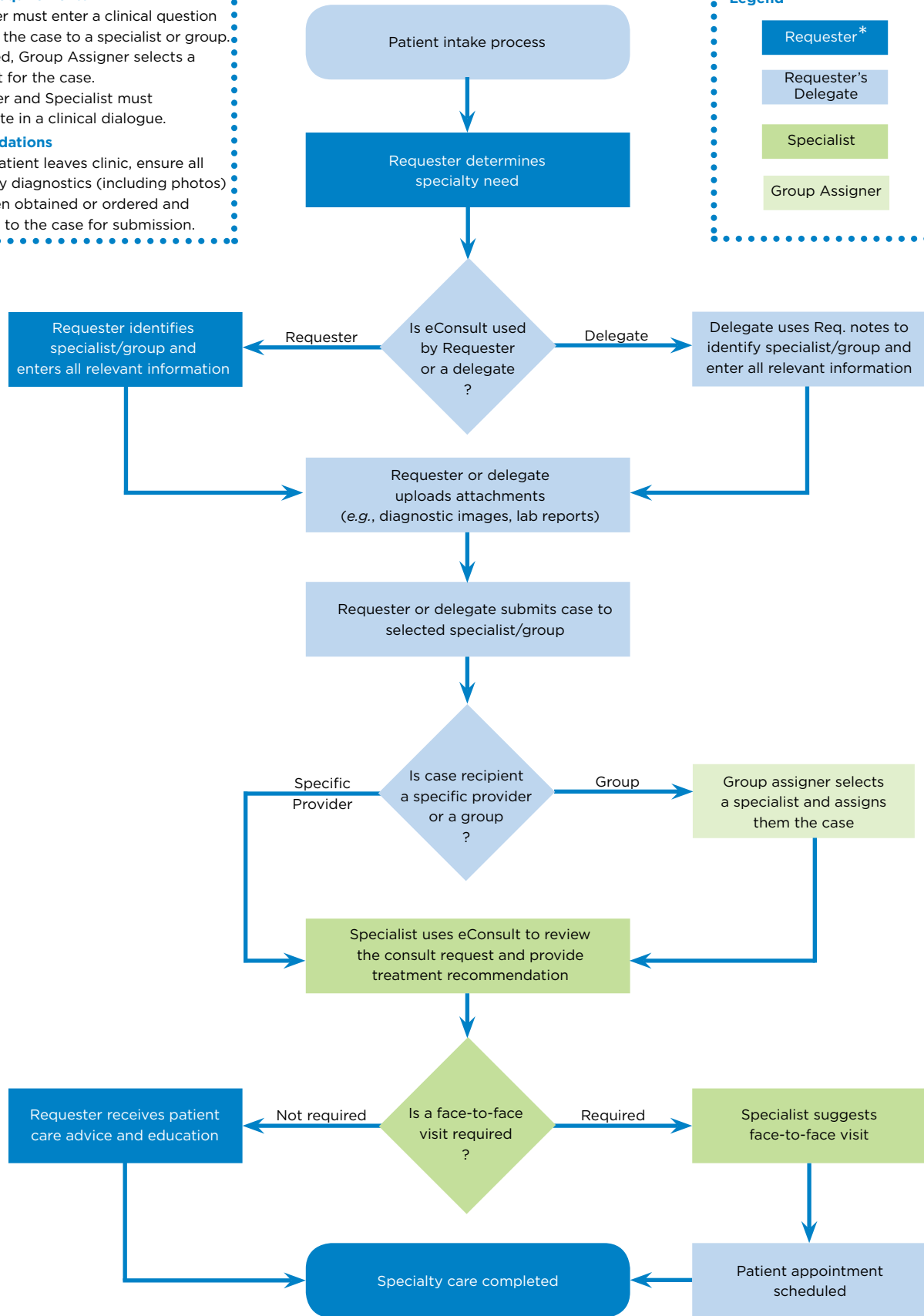
- ✓ Requester must enter a clinical question & submit the case to a specialist or group.
- ✓ If required, Group Assigner selects a specialist for the case.
- ✓ Requester and Specialist must participate in a clinical dialogue.

Recommendations

- ✓ Before patient leaves clinic, ensure all necessary diagnostics (including photos) have been obtained or ordered and attached to the case for submission.

Legend

- Requester*
- Requester's Delegate
- Specialist
- Group Assigner



* Requesting Provider